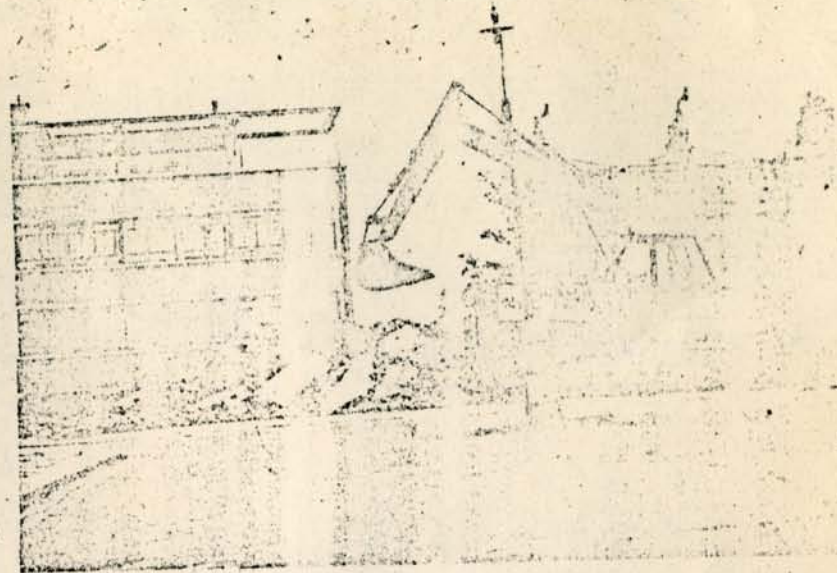
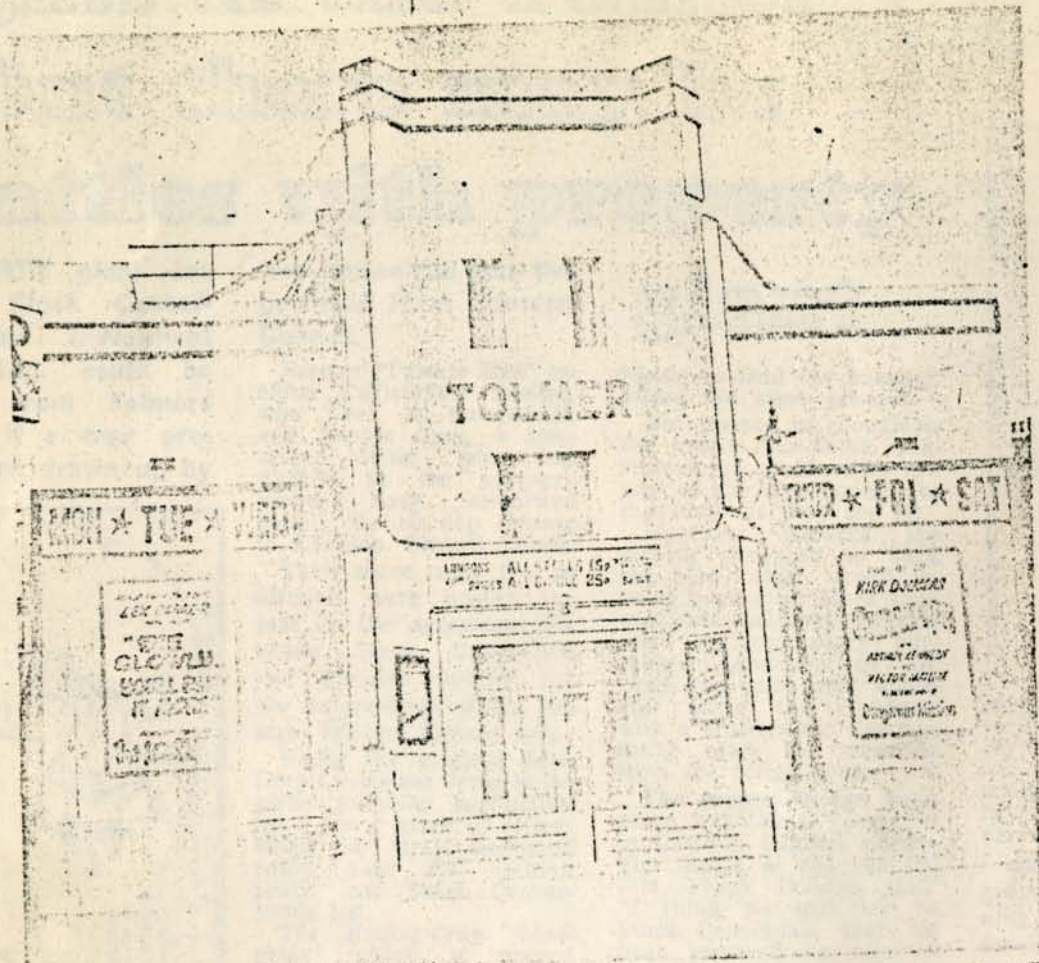
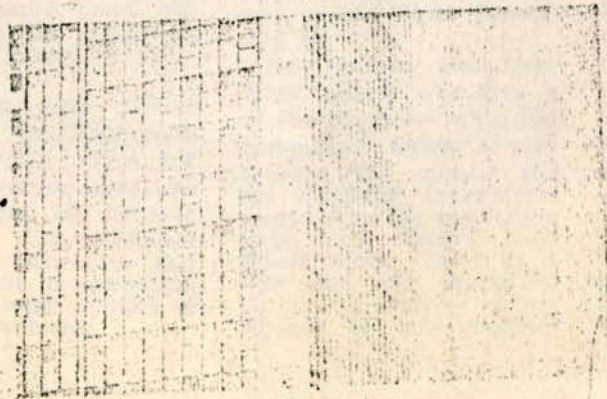


8 JUNE 1973

GOING . . . GOING . . .



. . . Gone



THE TOLMER Cinema was one of the first victims of the stranglehold Stock Conversion and Investment Trust have gained on the Tolmers Square area. The 1,000 seat cinema which closed in March, 1972, has been pulled down. It

opened in 1944 and offered the cheapest seats in London. It was previously a Congregational Church, built in the 19th century. The shadow of Joe Levy's Euston Centre Development now looms large over the empty site—a reminder

of what the next office tower block on the Tolmers Square site could look like. Meanwhile, there is a plan before Camden planners to use the site as a temporary car park. For reaction to that, see your changing borough, page 11.